

This product is an operator terminal used for machines or system automation. For product usage, you must have detailed information from the Harmony iDisplay HMIDID User Manual. You can see the manual from our support site (see below).

www.schneider-electric.com



NOTE:

Electrical equipment should be installed, operated, serviced, and maintained only by qualified personnel. No responsibility is assumed by Schneider Electric nor any of its affiliates or subsidiaries (hereinafter, referred to as Schneider Electric) for any consequences arising out of the use of this material. If the equipment is used in a manner not specified by the manufacturer, the protection provided by the equipment may be impaired.

⚠ DANGER

HAZARD OF ELECTRIC SHOCK, EXPLOSION OR ARC FLASH

- Remove all power from the device before removing any covers or elements of the system, and prior to installing or removing any accessories, hardware, or cables.
- Unplug the power cable from both this product and the power supply prior to installing or removing the product.
- Always use a properly rated voltage sensing device to confirm power is off where and when indicated.
- Replace and secure all covers or elements of the system before applying power to this product.
- Use only the specified voltage when operating this product.
- Since this product is not equipped with a power switch, be sure to connect a power switch to the power supply.
- Be sure to ground this product's FG terminal.

Failure to follow these instructions will result in death or serious injury.

⚠ DANGER

POTENTIAL FOR EXPLOSION

- Do not use this product in hazardous environments or locations other than Class I, Division 2, Groups A, B, C, and D.
- Substitution of any component may impair suitability for Class I, Division 2.
- Do not connect or disconnect this product unless power has been switched off or the area is known to be non-hazardous.
- Do not attempt to install, operate, modify, maintain, service, or otherwise alter this product except as permitted in this manual. Unpermitted actions may impair the suitability of this product for Class I, Division 2 operation.
- Use only non-incendive USB devices.
- Use the USB (mini-B) interface for temporary connection only during maintenance and setup of the device.
- Do not use the USB (mini-B) interface in hazardous locations.

Failure to follow these instructions will result in death or serious injury.

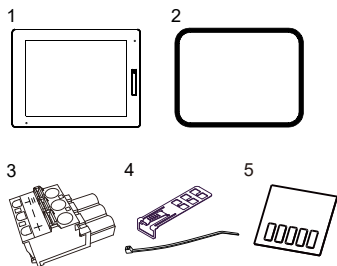
⚠ DANGER

ELECTRIC SHOCK AND FIRE

- When using the SG terminal to connect an external device to this product:
- Verify that a ground loop is not created when you set up the system.
- Connect the SG terminal to remote equipment when the external device is not isolated.
- Connect the SG terminal to a known reliable ground connection to reduce the risk of damaging the circuit.

Failure to follow these instructions will result in death or serious injury.

Package Contents



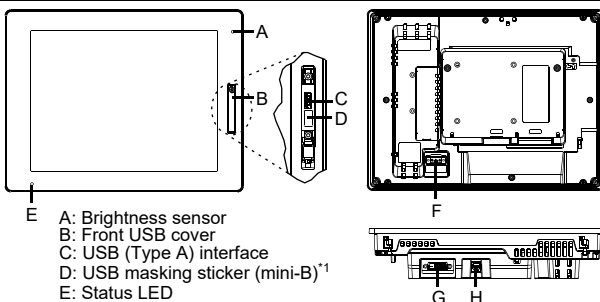
Please confirm that the following items listed are present. If you find anything damaged or missing, please contact your local distributor.

- 1 HMIDID x 1
- 2 Installation gasket (attached to this product) x 1
- 3 DC power supply connector (right angle) x 1
- 4 USB clamp (Type B) x 1 set (clip x 1 and tie x 1)
- 5 USB masking sticker (mini-B) x 1
- 6 USB cable (5 m) x 1
- 7 DVI-D cable (5 m) x 1
- 8 Disc media x 1
- 9 Quick Reference Guide (this guide) x 1

Part Numbers

HMIDID	HMIDID64DTD1	HMIDID64DTD1
	HMIDID73DTD1	HMIDID73DTD1

Parts Identification



- A: Brightness sensor
- B: Front USB cover
- C: USB (Type A) interface
- D: USB masking sticker (mini-B)*1
- E: Status LED
- F: Power connector
- G: DVI-D input interface
- H: USB (Type B) interface

*1 You cannot use the USB (mini-B) interface. Affix the provided USB masking sticker.

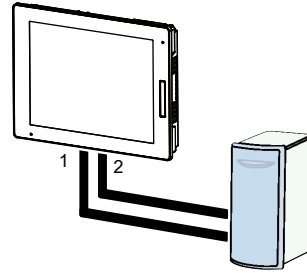
Status LED

- After power is turned on, normal status indication by the LED is: red light > flashing orange > green light.
- For other LED indications, refer to the Harmony iDisplay HMIDID User Manual.

General Specifications

Rated input voltage	12...24 Vdc
Input voltage limits	10.8...28.8 Vdc
Power consumption (max including Box Module)	HMIDID64DTD1: 17 W HMIDID73DTD1: 21 W
Surrounding air temperature	0...60 °C (32...140 °F)
Surrounding air and storage humidity (non condensing, wet bulb temperature 39 °C [102.2 °F] or less)	10%...90% RH
Pollution degree	2
Atmospheric pressure (operating altitude)	800...1,114 hPa (2,000 m [6,561 ft] or lower

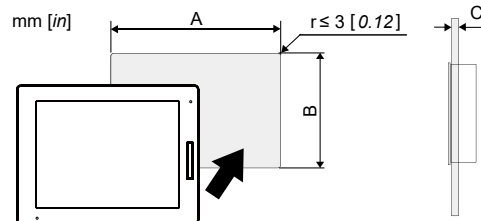
System Structure



- 1 DVI-D cable: Connects DVI-D input interface and host (for image signal reception)
- 2 USB cable: Connects USB (Type B) interface and host (for touch-panel data transmission and front USB (Type A) interface activation)

NOTE: Only one HMIDID can be connected to the host.

Panel Cut Dimensions



	A	B	C
HMIDID64DTD1	301.5 mm (+1/-0 mm) (11.87 in [+0.04/-0 in])	227.5 mm (+1/-0 mm) (8.96 in [+0.04/-0 in])	1.6... 5 mm (0.06... 0.2 in)
HMIDID73DTD1	383.5 mm (+1/-0 mm) (15.1 in [+0.04/-0 in])	282.5 mm (+1/-0 mm) (11.12 in [+0.04/-0 in])	

Installation

Display front surface	Enclosure front surface
IP66F, IP67F, Type 1, Type 4X ¹ , Type 13	IP66F, IP67F, Type 1, Type 4X ¹ , Type 13

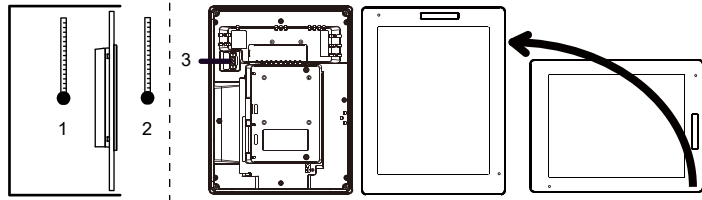
*1 Indoor use only

Installation Requirement:

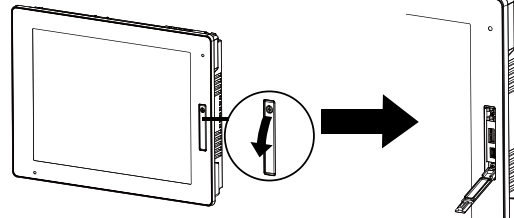
This product is designed for use on flat surfaces of Type 1, Type 4X (indoor use only) or Type 13 enclosure. Mount this product in an enclosure that provides a clean, dry, robust and controlled environment (IP66F, IP67F, Type 1, Type 4X [indoor use only], or Type 13 enclosure). When the front USB cover is open, the front surface is Type 1 enclosure.

- Be aware of the following when building this product into an end-use product:
- The rear face of this product is not approved as an enclosure. When building this product into an end-use product, be sure to use an enclosure that satisfies standards as the end-use product's overall enclosure.
- Install this product in an enclosure with mechanical rigidity.
- This product is not designed for outdoor use. UL certification obtained is for indoor use only.
- Install and operate this product with its front panel facing outward.
- The necessary torque for installation fasteners is 0.5 N•m (4.4 lb-in).

NOTE: IP66F and IP67F are not part of the UL certification.



Front USB Cover



NOTE: The necessary torque is 0.5 N·m (4.4 lb-in).

Front USB Port Connections

⚠ DANGER

POTENTIAL FOR EXPLOSION

- Verify that the power, input and output (I/O) wiring are in accordance with Class I, Division 2 wiring methods.
 - Substitution of any component may impair suitability for Class I, Division 2.
 - Do not disconnect equipment while the circuit is live or unless the area is known to be free of ignitable concentrations.
 - Remove power before attaching or detaching any connectors to or from this product.
 - Ensure that power, communication, and accessory connections do not place excessive stress on the ports. Consider the vibration in the environment when making this determination.
 - Securely attach power, communication, and external accessory cables to the panel or cabinet.
 - Use only commercially available USB cables.
 - Use only non-incendive USB configurations.
 - The associated non-incendive field wiring apparatus shall not be connected in parallel unless approved by the associated non-incendive apparatus.
 - This product is suitable for use and provides non-incendive field wiring to apparatus in Class I, Division 2, Groups A, B, C, D Hazardous Locations.
- Failure to follow these instructions will result in death or serious injury.**

- 1 Internal temperature
- 2 External temperature
- 3 Power connector

NOTE:

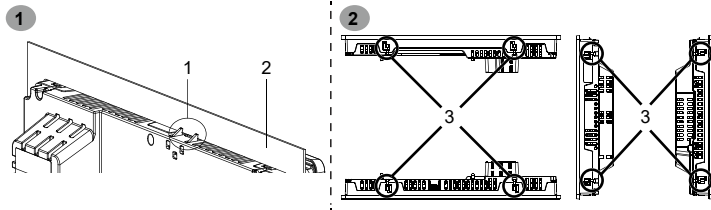
- Metal reinforcing strips may be attached to the inside of the wall, near the panel-cut, to increase its rigidity.
- Even if the installation wall thickness is within the specified range, depending on wall's material, size, and installation location of this product and other devices, the installation wall could warp. To prevent warping, the installation surface may need to be strengthened.
- Check that the ambient air temperature and the ambient humidity are within their specified ranges. When installing this product in a cabinet or enclosure, the ambient air temperature is the cabinet's or enclosure's internal and external temperature.
- Be sure that heat from surrounding equipment does not cause this product to exceed its standard operating temperature.
- When mounting this product vertically, ensure that the right side of this product faces up. In other words, the DC power connector should be at the top.
- When installing this product in a slanted position, the product face should not incline more than 30°.
- You can attach a commercial-type arm or wall-mount adapter using the arm mounting holes (VESA 75 mm specification) at the back of this product. Attach the four (4) M4 attachment screws (screw length: 10 mm [0.4 in]). The torque required for these screws is 0.7...0.8 N·m (6.2 ...7.1 lb-in).

NOTE: Use only the SELV (Safety Extra-Low Voltage) circuit to connect the USB interfaces.

Non-incendive field wiring apparatus (keyboards, mouse) are permitted for use on front USB port (Type A) of associated field wiring non-incendive Apparatus (this product). Non-incendive field wiring apparatus (this product) are permitted for use on front USB port (mini-B) of associated field wiring nonincendive apparatus (Computer). In addition to being non-incendive, any equipment connected to the front USB ports must satisfy the following criteria.

The following figures show the USB cable wiring:

Install to the Panel



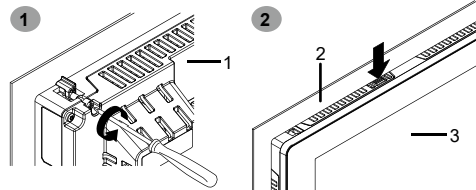
- 1 Anti-drop lock
- 2 Panel
- 3 Installation fastener
- 4 L-shaped part of the Installation fastener

Number of Installation Fasteners

HMIDID73DTD1: Top - 2, Bottom - 2, Right - 2, Left - 2
HMIDID64DTD1: Top - 2, Bottom -2, Right / Left- 0

NOTE: If the panel is thick (5 mm [0.2 in] or more), you may have trouble straightening the L-shaped part of the installation fastener. If this happens, push the display module from the front as you tighten the screws.

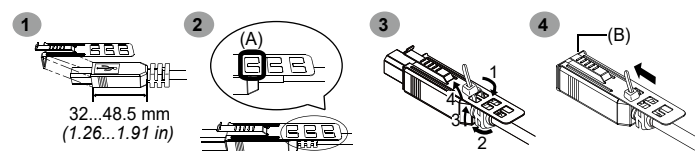
Removing from the Panel



- 1 Rear side
- 2 Panel
- 3 Front side

NOTE: If the panel is thick (5 mm [0.2 in] or more), you may have trouble straightening the L-shaped part of the installation fastener. If this happens, push the display module from the front as you loosen the screws.

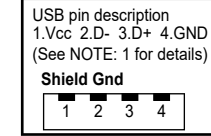
Attaching USB Cable Clamp (Type B)



- (A) Pass the tie through the hole.
- (B) USB (Type B) port

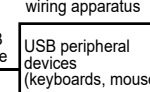
<Type A>

Associated non-incendive field wiring apparatus



Class I, Division 2 Groups A, B, C, D, or non-hazardous location

Non-incendive field wiring apparatus

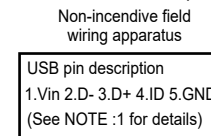


Class I, Division 2 Groups A, B, C, D

Circuit parameters	Front USB (Type A)
Open-circuit voltage = V_{oc}	5.25 Vdc
Short-circuit current = I_{sc}	1300 mA
Associated capacitance = C_a	265 μ F
Associated inductance = L_a	16 μ H

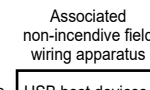
<mini-B>

NOTE: The front USB port (mini-B) cannot be used.



Class I, Division 2 Groups A, B, C, D

Associated non-incendive field wiring apparatus



Class I, Division 2 Groups A, B, C, D, or non-hazardous location

Circuit parameters	Front USB (mini-B)
Maximum input voltage = V_{max}	5.25 Vdc
Maximum load current = I_{max}	0.1 mA
Internal capacitance = C_i	0.24 μ F
Internal inductance = L_i	16 μ H

NOTE:

- The above tables list the Non-incendive Circuit Parameters. The Entity Concept allows interconnection of non-incendive apparatus with associated apparatus – not specifically examined combinations – as a system when the approved values of V_{oc} (or U_o) and I_{sc} (or I_o) for the associated apparatus are less than or equal to V_{max} (U_i) and I_{max} (I_i) for the non-incendive apparatus, and the approved values of C_a (C_o) and L_a (L_o) for the associated apparatus are greater than or equal to $C_i + C_{cable}$ and $L_i + L_{cable}$, respectively, for the non-incendive field wiring apparatus.

- Associated non-incendive field wiring apparatus and non-incendive field wiring apparatus shall satisfy the following:

Associated non-incendive field wiring apparatus	-	Non-incendive field wiring apparatus
V_{oc}	\leq	V_{max}
I_{sc}	\leq	I_{max}
C_a	\geq	$C_i + C_{cable}$
L_a	\geq	$L_i + L_{cable}$

3. If the electrical parameters of the cable are unknown, the following values may be used:

$$C_{\text{cable}} = 196.85 \text{ pF/m (60 pF/ft)}$$

$$L_{\text{cable}} = 0.656 \text{ }\mu\text{H/m (0.20 }\mu\text{H/ft)}$$

4. Wiring methods must be in accordance with the electrical code of the country where it is used.

This product must be installed in an enclosure. If installed in a Class I, Division 2 Location, the enclosure must be capable of accepting one or more Division 2 wiring methods.

Wiring

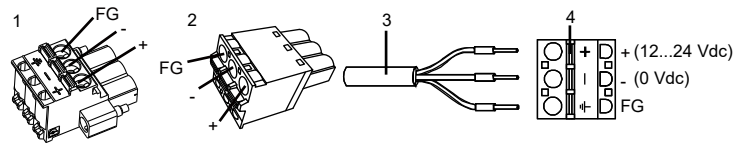
- Make sure the ground wire is either the same or heavier gauge than the power wires.
- Do not use aluminum wires in the power supply power cord.
- To prevent the possibility of a terminal short, use a pin terminal that has an insulating sleeve.
- If the ends of the individual wires are not twisted correctly, the wires may create a short circuit.
- The conductor type is solid or stranded wire.
- Use copper wire rated for 75 °C (167°F) or higher.
- Branch circuit protective device shall be used for rating 20 A for 12 to 24 Vdc input device on this product.
- You must use DC input with an isolating source for this product.
- Use the SELV (Safety Extra-Low Voltage) circuit and LIM (Limited Energy) circuit for DC input.

Precautions

After checking the wiring route carefully, use this product with FG connected to ground.

Grounding

Functional grounding: Grounding resistance of 100 Ω or less and a wire of 2 mm² (AWG 14) or thicker, or your country's applicable standard (same for FG and SG terminals).

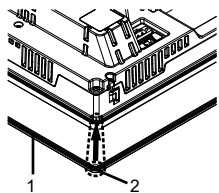


+	12...24 Vdc	1 HMIZGPWS2 (Right-angle type coming with this product) 2 HMIZGPWS (Straight type: option) 3 DC power cord 4 Opening button
-	0 Vdc	
FG	Grounded terminal connected to the panel chassis.	NOTE: Do not solder the wire directly to the power crimp pin.

Power cord diameter	0.75...2.5 mm ² (18...13 AWG)*1
Conductor type	Solid or stranded wire
Conductor length	

*1 For UL compatibility, use AWG 14 or AWG 13.

Replacing the Installation Gasket



HMIDID64DTD1	HMIZD56
HMIDID73DTD1	HMIZD57

- 1 Installation gasket
- 2 Protruding point

The installation gasket is on the rear of the display. Replace it when needed. Use only the replacement gasket for this product. The gasket must be inserted correctly into the groove for moisture resistance on the display module.

Regular Cleaning

When this product gets dirty, soak a soft cloth in water with a neutral detergent, wring the cloth tightly and wipe this product.

Chinese RoHS

中国RoHS相关资料
(本资料是中国RoHS的必备资料。)(This information is essential for China RoHS.)

15 部件名称 Part Name	有害物质 Hazardous Substances					
	铅 (Pb)	汞 (Hg)	镉 (Cd)	六价铬 (Cr (VI))	多溴联苯 (PBB)	多溴二苯醚 (PBDE)
金属部件 Metal parts	○	○	○	○	○	○
塑料部件 Plastic parts	○	○	○	○	○	○
电子件 Electronic	×	○	○	○	○	○
触点 Contacts	○	○	○	○	○	○
线缆和线缆附件 Cables & cabling accessories	○	○	○	○	○	○

本表格依据 SJ/T 11364 的规定编制。
○: 表示该有害物质在该部件所有均质材料中的含量均在 GB/T 26572 规定的限量要求以下。
×: 表示该有害物质至少在该部件的某一均质材料中的含量超出 GB/T 26572 规定的限量要求。
This table is made according to SJ/T 11364.
○: Indicates that the concentration of hazardous substance in all of the homogeneous materials for this part is below the limit as stipulated in GB/T 26572.
×: Indicates that concentration of hazardous substance in at least one of the homogeneous materials used for this part is above the limit as stipulated in GB/T 26572.